



70 Horseferry Road, Westminster
London SW1P

GARTONJONES.COM



70 Horseferry Road, Westminster
London, SW1P

GARTON JONES.COM

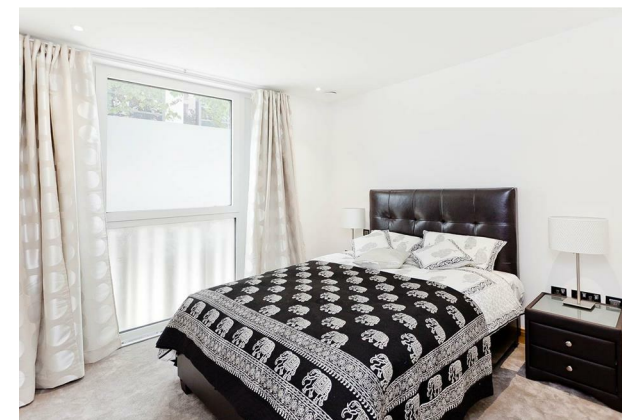
49 Marsham Street Lettings:
London +44 (0) 20 7340 0480
SW1P 3DP westminster@gartonjones.com
www.gartonjones.com

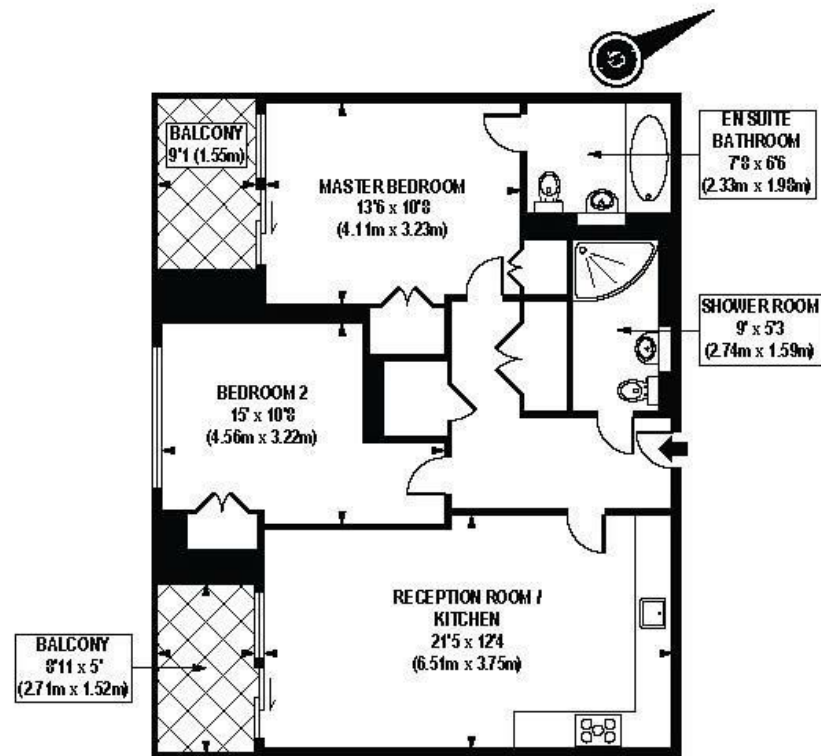
£1,000 Per Week

We are delighted to offer to let this 2 bedroom apartment offered with secure underground parking positioned only moments from the River Thames. The living space comprises of a dual aspect open plan reception room with a smart fitted kitchen with Miele appliances, fitted wardrobes to both bedrooms, 2 luxury bathrooms (1 en-suite), good storage and balcony. Residents will benefit from an array of amenities including a 24 hour concierge, a fully equipped fitness suite and access to an attractive landscaped courtyard garden with water feature. The Courthouse is fortunate to be in a superb Westminster location, being only 10 minutes from St James' Park and Westminster tube stations, as well as only a short walk to Victoria station. The Courthouse also benefits from a close proximity to attractions such as St James' Park, Westminster Abbey, Big Ben and universities such as LSE and King's College.

Deposit 5 Weeks
Minimum Term 12 Months
Council Tax Band F (London Borough of Westminster)
EPC Rating: B (81)

- 2 Bedroom Apartment
- Dual Aspect Open Plan Reception Room
- Contemporary Kitchen
- 2 Modern Bathrooms (En-Suite)
- Balcony
- Secure Parking
- 24 Hour Concierge
- Residents Fitness Suite & Landscaped Communal Gardens
- Close To Local Shops, Restaurants and St James's Park, Westminster & Victoria Transport Links





GROUND FLOOR

APPROX. GROSS INTERNAL FLOOR AREA 795 sq. ft / 73.82 sq. m

